

#### Door Status

Door currently **Open**



#### Alerts & Events

##### Alert

08.09.2021 - 11:32:00

User pressed panic button in Zone 1.

Location	Description
1	Temperature Relative Humidity Sensor
2	Air Quality Sensor
3	Vibration Sensor
4	Door Open Close Sensor
5	Light Sensor
6	Air Flow Sensor
7	Water Leakage Sensor
8	Panic Button
9	Motion Detection Sensor
10	Smoke Detection Sensor
11	Gateway Device
12	Display Unit
13	BBX Visible Lite
14	BBX Visible

Action Panel		
Room Information		
Name	Demo Hot Containment	
Floor Size	25 X 18 Mtr	
No of Worker	05	
No of Refrigerator	12	
No of Racks	20	
Temperature Map		
Rack	Front	Rear
Top	20°C	19°C
Middle	20°C	21°C
Bottom	20°C	20°C
Rack Status		
<input checked="" type="checkbox"/>	Temperature Sensor	
<input type="checkbox"/>	Humidity Sensor	
<input type="checkbox"/>	Air Quality Sensor	
<input type="checkbox"/>	Door Open Close Sensor	
<input type="checkbox"/>	Light Intensity Monitoring Sensor	
<input type="checkbox"/>	Motion Detection Sensor	
<input type="checkbox"/>	Panic Button	
<input type="checkbox"/>	Vibration Sensor	
<input type="checkbox"/>	Smoke Sensor (Coming Soon)	
<input type="checkbox"/>	Water Leakage Sensor (Coming Soon)	
<input type="checkbox"/>	Air Flow (Coming Soon)	

## Wireless Sensors

**AlertWare** Real-time remote Condition Monitoring using wireless IOT network is now easily achievable, and it just takes 15 minutes to set it up, without any need for prior technical knowledge.

EzzySense is Plug & Play micro-climate, micro-zone, wireless, real-time monitoring system.



Ambient /Surface Temperature



Relative Humidity



Time of Flight / Distance



Ambient Light



People Presence



Movement



Air Quality Index



Vibrations



Proximity



Ammonia

## Salient Features

**AlertWare** is a fast and affordable solution to create your **Digital Twin** on-the go



Wireless Sensors



Scalable Solution



Secure Communication



Low Power Hungry



Modular Architecture



Plug & Play Deployment

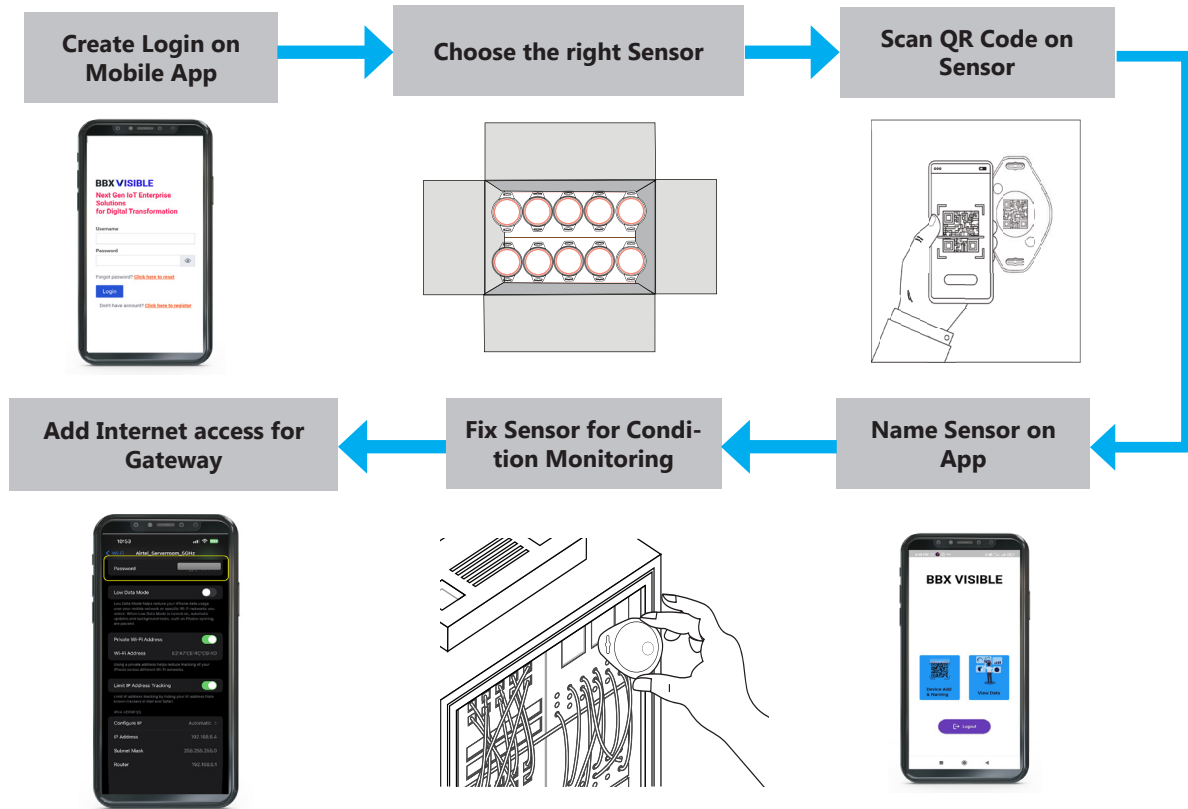


Zone & Micro-zone Monitoring

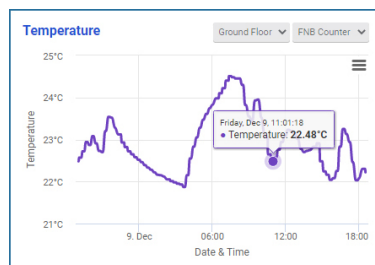


Battery Operated

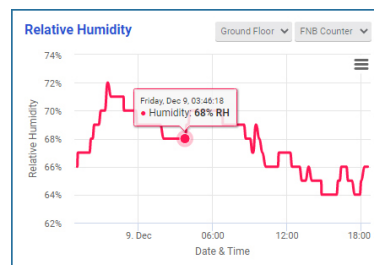
# 15 minutes Set Up



## View Data



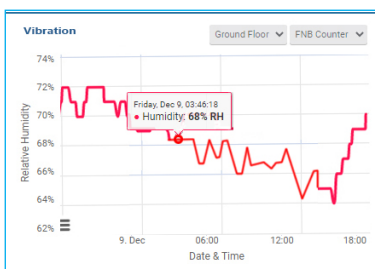
Temperature



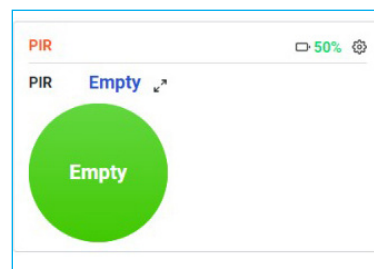
Humidity



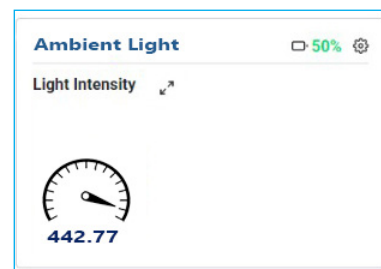
AQI



Vibraton



People Presence



Illuminance

## ENVIRONMENTAL, POWER & SECURITY MONITORING

### ALERTWARE WIRELESS SENSOR - AMBIENT MONITORING

Blackbox AlertWare solution provides comprehensive indoor ambient monitoring services which includes temperature and humidity .

- Broadcasts Bluetooth® 5.1 Low Energy signals
- Compatible with Apple iBeacon® technology
- Customizable advertising capability to handle various beacon formats (for example, Eddystone and AltBeacon)
- Compatible with all Bluetooth® Smart 4.0 devices
- Three-plus years of battery life (in ideal condition)
- Configurable and upgradable over-the-air
- Monitoring and Management with Cloud Platform or Mobile App



ARTICLE #	DESCRIPTION
ALERTWARE SE02	Temperature / Humidity Sensor
ALERTWARE SE03	Temperature / Humidity / Accelerometer

### ALERTWARE WIRELESS SENSOR - AIR QUALITY MONITORING

Blackbox AlertWare solution provides comprehensive indoor air quality monitoring services which includes temperature, humidity, pressure, air quality index, TVOC and eCO<sub>2</sub>

- Broadcasts Bluetooth® 5.1 Low Energy signals
- Compatible with Apple iBeacon® technology
- Customizable advertising capability to handle various beacon formats (for example, Eddystone and AltBeacon)
- Compatible with all Bluetooth® Smart 4.0 devices
- Three-plus years of battery life (in ideal condition)
- Configurable and upgradable over-the-air
- Monitoring and Management with Cloud Platform or Mobile App



ARTICLE #	DESCRIPTION
ALERTWARE SE09	Temperature / Humidity / pressure / air quality index / TVOC and eCO <sub>2</sub> Sensor

### ALERTWARE WIRELESS SENSOR - VIBRATION DETECTION

Blackbox AlertWare solution provides detection of any movement or vibration of critical assets.

- Broadcasts Bluetooth® 5.1 Low Energy signals
- Compatible with Apple iBeacon® technology
- Customizable advertising capability to handle various beacon formats (for example, Eddystone and AltBeacon)
- Compatible with all Bluetooth® Smart 4.0 devices
- Three-plus years of battery life (in ideal condition)
- Configurable and upgradable over-the-air
- Monitoring and Management with Cloud Platform or Mobile App



ARTICLE #	DESCRIPTION
ALERTWARE SE04	Movement / vibration

## ENVIRONMENTAL, POWER & SECURITY MONITORING

### ALERTWARE WIRELESS SENSOR - DOOR OPEN CLOSE MONITORING

Blackbox AlertWare Sensor provides comprehensive Door Open Close monitoring services. It is a compact beacon with HALL Sensor.

- Broadcasts Bluetooth® 5.1 Low Energy signals
- Compatible with Apple iBeacon® technology
- Customizable advertising capability to handle various beacon formats (for example, Eddystone and AltBeacon)
- Compatible with all Bluetooth® Smart 4.0 devices
- Three-plus years of battery life (in ideal condition)
- Configurable and upgradable over-the-air
- Monitoring and Management with Cloud Platform or Mobile App



ARTICLE #	DESCRIPTION
ALERTWARE SE07	Door Open Close monitoring Sensor

### ALERTWARE WIRELESS SENSOR - AMBIENT LIGHT MONITORING

Blackbox AlertWare solution provides comprehensive indoor light intensity monitoring service.

- Broadcasts Bluetooth® 5.1 Low Energy signals
- Compatible with Apple iBeacon® technology
- Customizable advertising capability to handle various beacon formats (for example, Eddystone and AltBeacon)
- Compatible with all Bluetooth® Smart 4.0 devices
- Three-plus years of battery life (in ideal condition)
- Configurable and upgradable over-the-air
- Monitoring and Management with Cloud Platform or Mobile App



ARTICLE #	DESCRIPTION
ALERTWARE SE06	Light intensity sensor

### ALERTWARE WIRELESS SENSOR - PANIC BUTTON

Blackbox AlertWare Sensor provides real-time alerts / SOS whenever user in distress. It is a compact beacon with BLE (Bluetooth® Low Energy) powered Panic Button.

- Broadcasts Bluetooth® 5.1 Low Energy signals
- Compatible with Apple iBeacon® technology
- Customizable advertising capability to handle various beacon formats (for example, Eddystone and AltBeacon)
- Compatible with all Bluetooth® Smart 4.0 devices
- Three-plus years of battery life (in ideal condition)
- Configurable and upgradable over-the-air
- Monitoring and Management with Cloud Platform or Mobile App



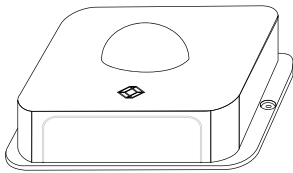
ARTICLE #	DESCRIPTION
ALERTWARE SE11	Movement / vibration

# ENVIRONMENTAL, POWER & SECURITY MONITORING

## ALERTWARE WIRELESS SENSOR - MOTION DETECTION SENSOR

Blackbox AlertWare Sensor provides real-time detection of human presence. It is a compact beacon with BLE (Bluetooth® Low Energy) powered passive infra-red sensor.

- Broadcasts Bluetooth® 5.1 Low Energy signals
- Compatible with Apple iBeacon® technology
- Customizable advertising capability to handle various beacon formats (for example, Eddystone and AltBeacon)
- Compatible with all Bluetooth® Smart 4.0 devices
- Three-plus years of battery life (in ideal condition)
- Configurable and upgradable over-the-air
- Monitoring and Management with Cloud Platform or Mobile App



ARTICLE #	DESCRIPTION
ALERTWARE SE16	PIR Sensor

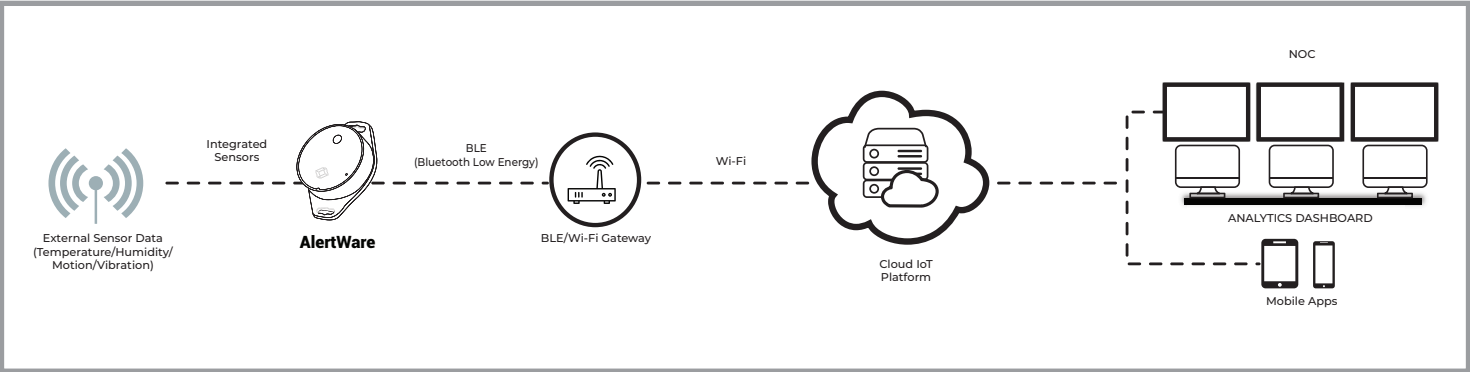
## ALERTWARE WIRELESS SENSOR - GATEWAY DEVICE

- Blackbox Detecting Bluetooth device wireless signal
- Gateway working states will be displayed by LED
- 300 bluetooth device can be scanned per second
- Supporting MQTT(TCP/SSL), HTTP/HTTPS
- Internet transmission protocol
- Firmware can be upgraded by OTA and USB
- Users will easy to get the data from iBeacon
- Eddystone, ble Sensor, humidity and temperature and accelerometer, and other bluetooth device, uploading these information to the server or IOT cloud platform
- Bluetooth Standard: BLE5.0 (nRF52832)
- Power supply: PoE(48V), DC(9V) and Micro USB(5V)
- Protocol: MQTT (TCP/SSL) and HTTP/HTTPS
- Network: Ethernet and WIFI
- User can modify the gateway parameters on the web UI.
- The WIFI data rate of MKGW1 can be the Max 150Mbps



ARTICLE #	DESCRIPTION
AlertWare SE99	AlertWare Gateway

## Network Diagram



## WHY BLACK BOX?

**Black Box®** is a trusted IT solutions provider delivering cutting-edge technology products and world-class consulting services to businesses across the globe in every industry. The breadth of our global reach and depth of our expertise accelerate customer success by bringing people, ideas, and technology together to solve real-world business problems.